
User manual

37 BEAM WASH MOVING HEAD



User Manual
KEEP THIS MANUAL FOR FUTURE NEEDS

Unpacking

Thank you for choosing 1240Zoom Led Mover. For your own safety, please read this manual before installing the device. This manual covers the important information on installation and applications. Please install and operate the fixture with following instructions. Meanwhile, please keep this manual well for future needs.

LED740zoom is made of a new type of high temperature strength of engineering plastics and cast aluminum casing with nice outlook. The fixture is designed and manufactured strictly following CE standards, complying with international standard DMX512 protocol. It's available independently controlled and linkable with each other for operation. And it is applicable for large-scale live performances, theater, studio, nightclubs and discos.

4-IN-1 LEDs(GBW) which features high brightness and stability. Please carefully unpack it when you receive the fixture and check whether it is damaged during the transportation. And please check whether the following items are included inside the box:

Moving Head-----One	Signal Cable----One
Hanging Bracket-----One	Power Cable----One
User Manual----One	

Maintenance and Cleaning

The following points have to be considered during the inspection:

1. All screws for installing the devices or parts of the device have to be tightly connected and must not be corroded. 2. There must not be any deformations on the housing, color lenses, fixations and installation spots (ceiling, suspension, trussing). 3. Mechanically moved parts must not show any traces of wearing and must not rotate with unbalances. 4. The electric power supply cables must not show any damage, material fatigue or sediments.

Further instructions depending on the installation spot and usage have to be adhered by a skilled installer and any safety problems have to be removed.



CAUTION!

Disconnect from mains before starting maintenance operation.

In order to make the lights in good condition and extend the life time, we suggest a regular cleaning to the lights. 1) Clean the inside and outside lens each week to avoid the weakness of the lights due to accumulation of dust. 2) Clean the fan each week.

3) A detailed electric check by approved electrical engineer each three month, make sure that the circuit contacts are in good condition, prevent the poor contact of circuit from overheating.

We recommend a frequent cleaning of the device. Please use a moist, lint- free cloth. Never use alcohol or solvents. There are no serviceable parts inside the device. Please refer to the instructions under "Installation instructions". Should you need any spare parts, please order genuine parts from your local dealer.

Safety Instructions

This device has left the factory in perfect condition. In order to maintain this condition and to ensure a safe operation, it is absolutely necessary for the user to follow the safety instructions and warning notes written in this user manual.

If the device has been exposed to temperature changes due to environmental changes, do not switch it on immediately. The arising condensation could damage the device. Leave the device switched off until it has reached room temperature.

This device falls under protection-class I. Therefore it is essential that the device be earthed.

The electric connection must carry out by qualified person.

The device shall only be used with rate voltage and frequency.

Make sure that the available voltage is not higher than stated at the end of this manual.

Make sure the power cord is never crimped or damaged by sharp edges. If this would be the case, replacement of the cable must be done by an authorized dealer.

Always disconnect from the mains, when the device is not in use or before cleaning it. Only handle the power cord by the plug. Never pull out the plug by tugging the power cord.

During initial start-up some smoke or smell may arise. This is a normal process and does not necessarily mean that the device is defective, it should decrease gradually.

Please don't project the beam onto combustible substances.

Fixtures cannot be installed on combustible substances, keep more than 50cm distance with wall for smooth air flow, so there should be no shelter for fans and ventilation for heat radiation.

If the external flexible cable or cord of this luminaire is damaged, it shall be exclusively replaced by the manufacturer or his service agent or a similar qualified person in order to avoid a hazard.

Operation Instructions

-The moving head is for wash & Beam effect for on-site decoration purpose.

-Don't turn on the fixture if it's been through severe temperature difference like after transportation because it might damage the light due to the environment changes. So make sure to operate the fixture until it is in normal temperature.

-This light should be keep away from strong shaking during any transportation or movement.

-Don't pull up the light by only the head, or it might cause damages to the mechanical parts.

-Don't expose the fixture in overheat, moisture or environment with too much dust when installing it. And don't lay any power cables on the floor. Or it might cause electronic shock to the people.

-Make sure the installation place is in good safety condition before installing the fixture.

-Make sure to put the safety chain and check whether the screws are screwed properly when installing the fixture.

-Make sure the lens are in good condition. It's recommended to replace the units if there are any damages or severe scratch.

-Make sure the fixture is operated by qualified personnel who knows the fixture before using.

-Keep the original packages if any second shipment is needed.

-Don't try to change the fixtures without any instruction by the manufacturer or the appointed repairing

agencies.

-It is not in warranty range if there are any malfunctions from not following the user manual to operate or any illegal operation, like shock short circuit, electronic shock, lamp broke, etc.

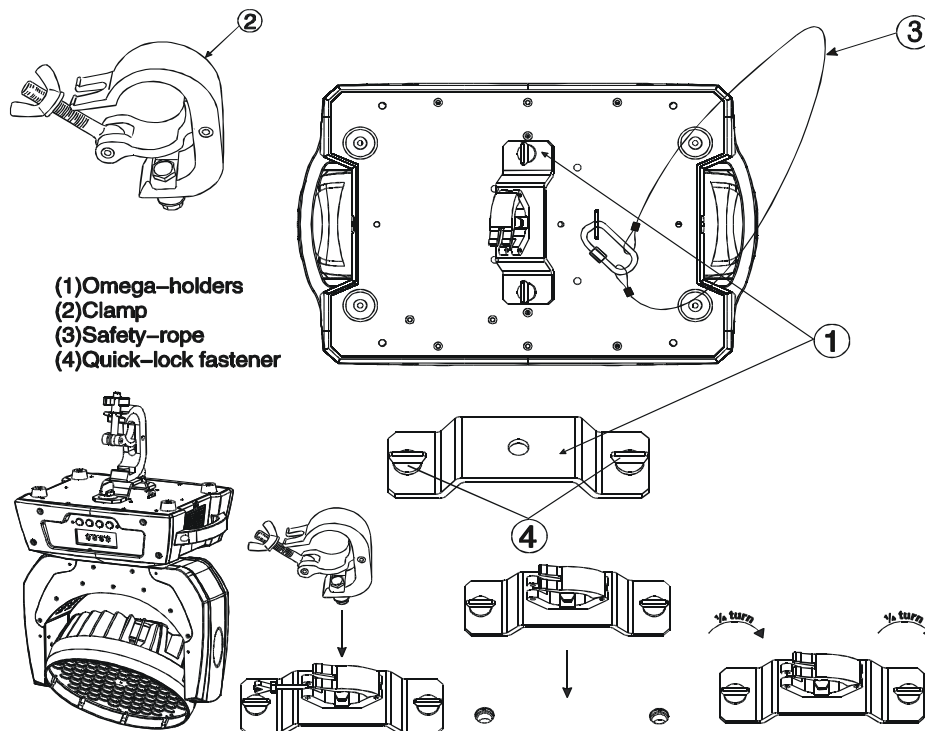
Mounting and Installation

Cautions: For added protection mount the fixtures in areas outside walking paths, seating areas, or in areas where the fixture might be reached by unauthorized personnel.

Before mounting the fixture to any surface, make sure that the installation area can hold a minimum point load of 10 times the device's weight.

Fixture installation must always be secured with a secondary safety attachment, such as an appropriate safety cable.

Clamp Mounting: The mover provides a unique mounting bracket assembly that integrates the bottom of the base, the included "Omega Bracket," and the safety cable rigging point in one unit (see the illustration below). When mounting this fixture to truss be sure to secure an appropriately rated clamp to the included omega bracket using a M10 screw fitted through the center hole of the "omega bracket". As an added safety measure be sure to attach at least one properly rated safety cable to the fixture using one of the safety cable rigging points integrated in the base assembly.



Specification :

Input voltage:AC100 - 240V,50/60Hz

Lamp source :37pcs 15W high power RGBW 4in1 LEDs

Zoom angle:5-60degree

LEDs:Individual ring control

CTO:Linear controlled 2500-7000K.

Operating modes: wash, beam, zoom

Dimmer:0-100% linear electronic dimmer

Housing:Flame-retardant plastic

DMX512: 3/5-pin XLR IN-OUT sockets

Power connect: Powercon in-out

DMX Channel :24/36/48CH

Display:LCD display

Pan/Tilt Resolution: 16 bit

PAN :540° TILT : 270°

Size:33*26*41cm

Weight:15 Kg

Package:Carton(1in1), Flight case(2in1)

MENU

1、DMX Settings

2、Run Mode

DMX512:

Slow:

Fast:

Sound

manual:

3、Invert PAN/TILT

4、Display Set

Invert Word

English/Chinese:

LCD Backlight on

5、Manual Set

PAN

PANMICO

TILT

TILTMICO

ZOOM

DIM

STROBE

DIM_R

DIM_G

DIM_B

DIM_W

6、Sound Sence

7、System Set

System Information:

The version:V1

PAN Reset: X Normal Wrong

TILT Reset: Y Normal Wrong

Default Settings:

Code Settings:

PAN_INIT:

TILT_INIT:

ZOOM_INIT:

SET_R:

SET_G:

SET_B:

SET_W:

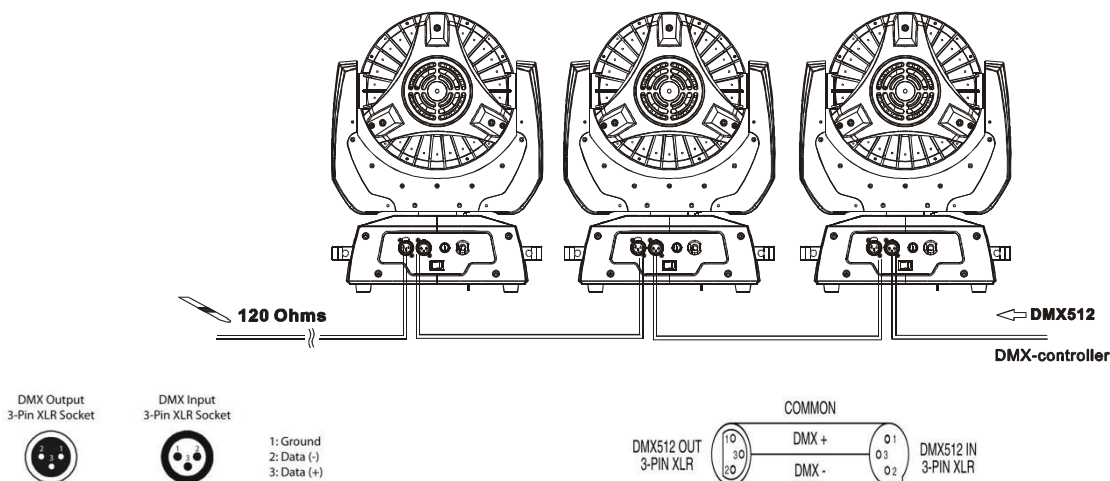
8、Reset

DMX-512 control connections

Connect the provided XLR cable to the female 3-pin XLR output of your controller and the other side to the male 3-pin XLR input of the moving head. You can chain multiple

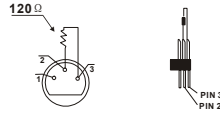
Moving heads be connected together through serial linking. The cable needed should be two core, screened cable with XLR input and output connectors. Please refer to the diagram below.

DMX-512 connection with DMX terminator



For installations where the DMX cable has to run a long distance or is in an electrically noisy environment, such as in a discotheque, it is recommended to use a DMX terminator. This helps in preventing corruption of the digital control signal by electrical noise. The DMX terminator is simply an XLR plug with a 120 Ω resistor connected between pins 2 and 3, which is then plugged into the output XLR socket of the last fixture in the

chain. Please see illustrations below.



Channel List

48 CH	FUNCTION	DMX VALUE
1	X	0-255
2	X fine	0-255
3	Y	0-255
4	Y fine	0-255
5	XY speed	0-255
6	zoom	0-255
7	Dimmer	0-255
8	Strobe	0-9
		10-154
		155-204
		205-255
9	LED1 Red	0-255
10	LED1 Green	0-255
11	LED1 Blue	0-255
12	LED1 White	0-255
13	LED2 Red	0-255
14	LED2Green	0-255
15	LED2Blue	0-255
16	LED2White	0-255
●	●	●
●	●	●
●	●	●
29	LED6R	0-255
30	LED6G	0-255
31	LED6B	0-255
32	LED6W	0-255
33	LED7R	0-255
34	LED7G	0-255
35	LED7B	0-255
36	LED7W	0-255
37	COT	0-9
		10-255
38	Color	0-9
		10-19

		20–29
		30–39
		40–49
		50–59
		60–69
		70–79
		80–89
		90–99
		100–109
		110–119
		120–129
		130–139
		140–149
		150–159
		160–169
		170–179
		180–189
		190–199
		200–209
		210–224
		225–239
		240–255
39	static function1	0–9
		10–19
		20–29
		30–39
		40–49
		50–59
		60–69
		70–79
		80–89
		90–99
		100–109
		110–119
		120–129
		130–139
		140–149
		150–159
		160–169
		170–179
		180–189
		190–199
		200–209

		210-255
40	dynamic effect	0-9
		10-255
41	Back light Red	0-255
42	Back light Green	0-255
43	Back light Blue	0-255
44	Back light White	0-255
45	Effect direction adjustment	0-127
		128-255
46	Speed	0-255
47	Macro	0-9
		10-99
		100-199
		200-255
48	Reset	0-239
		240-250
		251-255

24CH	FUNCTION	DMX Value
1	X	0-255
2	X fine	0-255
3	Y	0-255
4	Y fine	0-255
5	XY speed	0-255
6	zoom	0-255
7	Dimmer	0-255
8	Strobe	0-9
		10-154
		155-204
		205-255
9	Red	0-255
10	Green	0-255
11	Blue	0-255
12	white	0-255
13	COT	0-9
		10-255
14	color	0-9
		10-19
		20-29
		30-39

		40-49	
		50-59	
		60-69	
		70-79	
		80-89	
		90-99	
		100-109	
		110-119	
		120-129	
		130-139	
		140-149	
		150-159	
		160-169	
		170-179	
		180-189	
		190-199	
		200-209	
		210-224	
		225-239	
		240-255	
15	Static pattern effect	0-9	
		10-19	
		20-29	
		30-39	
		40-49	
		50-59	
		60-69	
		70-79	
		80-89	
		90-99	
		100-109	
		110-119	
		120-129	
		130-139	
		140-149	
		150-159	
		160-169	
		170-179	
		180-189	
		190-199	
		200-209	
		210-255	
16	dynamic effect	0-9	

		10-255
17	Back light Red	0-255
18	Back light Green	0-255
19	Back light Blue	0-255
20	Back light white	0-255
21	Effect direction adjustment	0-127
		128-255
22	Effect speed	0-255
23	Macro	0-9
		10-99
		100-199
		200-255
24	Reset	0-239
		240-250
		251-255

36CH	FUNCTION	DMX Value
1	X	0-255
2	X FINE	0-255
3	Y	0-255
4	Y FINE	0-255
5	XY Speed	0-255
6	zoom	0-255
7	Dimmer	0-255
8	Strobe	0-9
		10-154
		155-204
		205-255
9	LED1R	0-255
10	LED1G	0-255
11	LED1B	0-255
12	LED1W	0-255
13	LED2R	0-255
14	LED2G	0-255
15	LED2B	0-255
16	LED2W	0-255
17	LED3R	0-255
18	LED3G	0-255
19	LED3B	0-255
20	LED3W	0-255

21	LED4R	0-255
22	LED4G	0-255
23	LED4B	0-255
24	LED4W	0-255
25	COT	0-9
		10-255
26	COLOR	0-9
		10-19
		20-29
		30-39
		40-49
		50-59
		60-69
		70-79
		80-89
		90-99
		100-109
		110-119
		120-129
		130-139
		140-149
		150-159
		160-169
		170-179
		180-189
		190-199
27	Static pattern effect	200-209
		210-224
		225-239
		240-255
		0-9
		10-19
		20-29
		30-39
		40-49
		50-59
		60-69
		70-79
		80-89
		90-99
		100-109
		110-119
		120-129

		130-139
		140-149
		150-159
		160-169
		170-179
		180-189
		190-199
		200-209
		210-255
28	dynamic effect	0-9
		10-255
29	Back light Red	0-255
30	Back light Green	0-255
31	Back light Blue	0-255
32	Back light white	0-255
33	Effect direction adjustment	0-127
		128-255
34	Effect speed	0-255
35	Macro	0-9
		10-99
		100-199
		200-255
36	Reset	0-239
		240-250
		251-255